

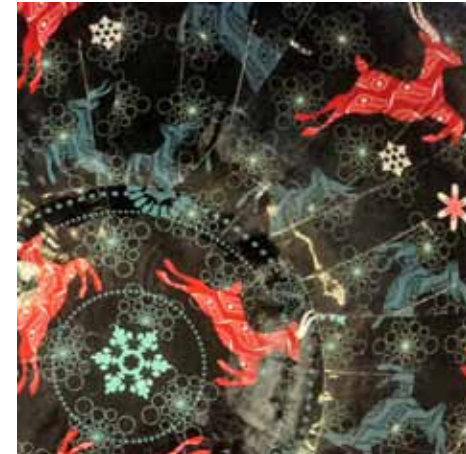


Wola Nani,
helping people living
with HIV and AIDS
to help themselves.

WOLA NANI CHRISTMAS RANGE

Taking our inspiration from the forthcoming Festive Season, Wola Nani in conjunction with Mireille van Reenen (Designer & Illustrator) has come up with an exclusive collection of stunning Christmas designs. These designs add a whole new level of Festive Fun to our current comprehensive papier-mache product offerings, and work especially well in combination with the Wola Nani Shweshwe Range.

We have 3 fun, whimsical designs in our collection, namely Snowflakes, Angels and Springbuck.





COMPANY OVERVIEW

Wola Nani, Xhosa for 'we embrace and develop one another', was established in 1994 as a non-profit organisation to help bring relief to the communities hardest hit by the HIV crisis. It is within the context of South Africa having the largest burden of HIV infection in Sub-Saharan Africa that Wola Nani works towards its vision of seeing the quality of life of persons living with HIV/AIDS improved to an extent that they are living positively, with hope.

Formed against a background of economic curtailment on welfare spending and a huge increase in the number of HIV and AIDS cases, Wola Nani initiated programmes to help HIV+ people in the local community cope with the emotional and financial strains brought about by HIV and AIDS. Wola Nani is now one of the oldest non-governmental organizations in the Cape which consistently provides this type of service to women and children.

Wola Nani's services have traditionally been designed for unemployed women infected with HIV for two main reasons. The first, proven by studies, is that women are most vulnerable to HIV/AIDS due to the range of social, economic, biological, cultural and legal factors. The second, is that women are often, whether by choice or not, the consistent providers for the family in terms of food and care. In the same context, children often suffer the negative effects of poverty, disease and the breakdown in family life. Children who live in poverty are all vulnerable- whether orphaned by HIV and AIDS or not, therefore, children are a focal point of the work of Wola Nani in addressing the social effects of HIV and AIDS.

OUR CRAFT

Wola Nani crafts emerged in response to the need for unemployed, HIV-positive women to generate an income. Through a developmental, self help approach the project's members have been able to take greater control of their lives and achieve a better quality of life. The craft project has been in operation for more than 15 years and at present, the program supports 54 crafters. The project not only provides the crafters with income opportunities, and thus economic empowerment, but also reinstalls a sense of worth and hope.

Papier maché can date as far back at the 2nd century AD and has been used to make anything from beds to armor, luckily for us though we've only resigned ourselves to making beautiful home accessories and crafts! Our crafts are inspired by ethnicity and are centered upon eco design (on average 90 % of the product is recycled). We operate under strong ethical standards and Fair Trade practices. We have become known for our unique designs within papier maché, our range has become more diverse and features designs using traditional Shweshwe prints and donated labels from old South African produce. All of the materials used for the crafts are as sustainable as possible, the paper used is recycled and many of the design logos are donated by South African companies.

For a number of reasons papier maché is our most popular craft with the women. With the use of three simple products: paper, glue, varnish and the sun on their doorsteps to dry the craft it's hard not to enjoy the process. The simplicity of the product also means that the crafters can work from home. This ensures that, whilst earning an income, they can also manage their home lives and look after their families. With the bowl taking roughly 4 hours to make women can feel a sense of achievement and financial stability.



MERCHANDISING SUGGESTIONS

